

La Cité Maraîchère de Romainville*

*The Market Garden City of Romainville

A LIVING LABORATORY TO CULTIVATE THE CITY OF TOMORROW



www.lacitemaraichere.fr



Ville de Romainville

Project
partners:



seine-saint-denis
LE DÉPARTEMENT



Métropole
de Grand Paris



This project has received funding from the European Union's Horizon 2020 research and innovation programme under grant agreement N° 862663.



Mushroom cultivation

Since 2011, the City of Romainville has been developing urban agriculture on its territory. Supported by the Mayor and the Municipality, this innovative project responds to the major ecological challenges of our time while promoting sustainable economic and social development of the municipality. Urban agriculture already takes different forms in Romainville: family gardens, apiaries, eco-pasture, urban farms, orchards, agricultural roofs, green public spaces, etc.

The *Cité Maraîchère*, which will be completed in the summer of 2020 in the Marcel-Cachin district, is the flagship part of this project. In order to operate this new public facility, the City of Romainville has decided to create a municipal agricultural board.

Some objectives of the *Cité Maraîchère*:

- > Creating a place of life and encounter
- > Creating new public facilities to serve residents
- > Creating jobs in integration
- > Producing quality fresh fruit and vegetables
- > Providing access to these products to the local population
- > Develop a project that will benefit the local population
- > Educate, train, raise awareness



Seine-Saint-Denis has long been an agricultural land. Until a relatively recent period, the municipalities in the inner suburbs, and in particular Romainville, have had small-scale market garden farming, ensuring part of their supply of early fruit and vegetables. In addition to this history with which Romainville must reconnect, the main aim is to promote healthy eating by strengthening short circuits. This Cité Maraîchère will provide access to quality food for all city dwellers. When purchasing power decreases, fruits and vegetables are the first foods to disappear from the diet. In addition, this project will generate a commercial economic activity, creating sustainable jobs and professional integration.

– Corinne Valls, Mayor of Romainville



1000

M² OF ARABLE
LAND

35

CM: DEPTH
OF GROWING
TRAYS

+ THAN 10

JOB'S CREATED

7

EDUCATIONAL
GARDEN PLOTS

1

COLLECTIVE
COMPOSTER

An agronomic project



Different species of fruits, vegetables and aromatic plants will be produced, depending on the season. Some products with high added value, such as oyster mushrooms, edible flowers or microgreens, will also be cultivated.

Cultivation will take place in above-ground containers, in a substrate made up of urban waste (circular system), without pesticides or synthetic chemical fertilizers, without heating or artificial light.

Technical and scientific monitoring is ensured by a group of experts.

An educational project

Awareness workshops for schools and the general public will be offered throughout the year.

Training for students (universities, professional sections of high schools, schools), but also for working people (employees, job seekers, project leaders) will also be organized.

Several facilities dedicated to education have therefore been integrated into the building: a greenhouse, gardens and modular spaces.



Educational greenhouse



Educational gardens

A social project

ACTIVITIES GENERATING LOCAL EMPLOYMENT AND PROFESSIONAL OPPORTUNITIES

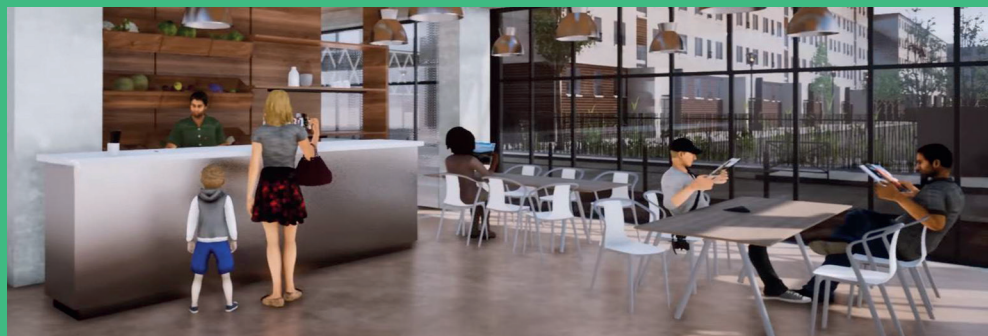
- Creation of jobs, some of them in integration for the residents of the territory (the number of which will vary according to the activity).
- Offers of varied courses, better adapted to the different profiles of unemployed people: market gardening, eco-activities and reception-sales-service.
- Training and professional qualification in sectors that are recruiting.
- Hosting project leaders in the field of sustainable food processing.
- Development of new local skills based on sustainable practices, thus helping to raise awareness among residents of the challenges of ecological transition.

A LIVELY PLACE TO MEET PEOPLE

- Café-canteen.
- Square (table, benches and edible landscaping).
- Neighborhood composter.

FOR HEALTHY AND SUSTAINABLE EATING

- Direct sale to residents at suitable prices.
- Distribution of products to the future social grocery store.
- Adapted offers for the most modest households.



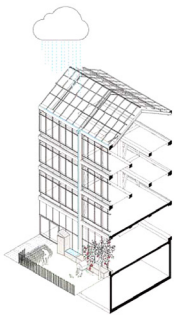
Solidarity café-canteen

An architectural project

The architecture of the building has been designed for urban agriculture; its layout, volumes and materials meet the needs for natural light.

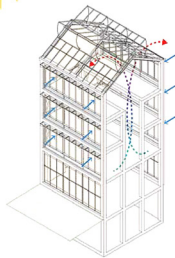
The vertical greenhouse, inserted in its environment, is a remarkable green building:

- Bio-sourced materials for insulation.
- Wood boiler for the spaces open to the public.
- Recovery of rainwater for watering.
- Solar and thermal protection.
- Natural heat, light and ventilation.
- Intelligent management of openings, solar shadings and watering.



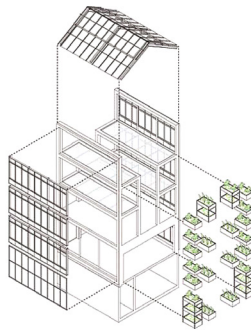
Reduction of consumption

Managing, storing and redistributing the "water" sector



Renewable Energy

Take advantage of solar energy and ventilate to avoid the effects of overheating during the day.



Prefabrication

Design a constructive device based on the prefabrication of elements (structure, facades, containers, etc.) and create inertia to restore the excess calories stored at night.

350

M² OF
EDUCATIONAL
SPACES

7

LEVELS OF
CULTIVATION

90

M²: SIZE OF THE
EDUCATIONAL
GREENHOUSE

5

million

EUROS

THEY SUPPORT
THE PROJECT:

Île-de-France Region:
1,022,552.53 euros

The State: 1,000,000 euros

Greater Paris Metropolis:
100,000 euros

The Seine-Saint-Denis
Departmental Council:
250,000 euros

Schedule



2012 – PROJECT LAUNCH, PRESENTATION OF THE OBJECTIVES TO THE RESIDENTS



2016 – SELECTION OF THE PROJECT MANAGEMENT TEAM AND PRESENTATION OF THE ARCHITECTURAL AND TECHNICAL PROJECT



2017 – PRESENTATION OF THE OPERATING PROJECT

JANUARY 2019 – CONSTRUCTION BEGINS



SUMMER 2020 – HANDOVER OF THE BUILDING

AUTUMN 2020 – START OF ACTIVITIES



For more information



www.lacitemaraichere.fr
contact@lacitemaraichere.fr