



"FOOD CROSSING DISTRICT"
Industrial Symbiosis:
Two new foods from by-products and a
map of circular economies in the Emilia
Romagna region



CIRI AGROALIMENTARE Coordinator
Scientific Director *Prof.ssa Tullia Gallina Toschi*



ALMA MATER STUDIORUM
UNIVERSITÀ DI BOLOGNA
CENTRO INTERDIPARTIMENTALE
DI RICERCA INDUSTRIALE AGROALIMENTARE

ENEA-LEA
Scientific Director *Eng. Simona Scalbi*

ENEA
Agenzia nazionale per le nuove tecnologie,
l'energia e lo sviluppo economico sostenibile



Enterprises involved:

Barilla

Barilla
The Italian Food Company. Since 1877.

Consorzio Casalasco del Pomodoro

CASALASCO
Consorzio Casalasco del Pomodoro



RETE ALTA TECNOLOGIA
EMILIA-ROMAGNA
HIGH TECHNOLOGY NETWORK



PIATTAFORMA
AGROALIMENTARE



ASTER
innovazione attiva

**POR FESR
EMILIA-ROMAGNA
2014/2020**

UNIONE EUROPEA
Fondo europeo di sviluppo regionale

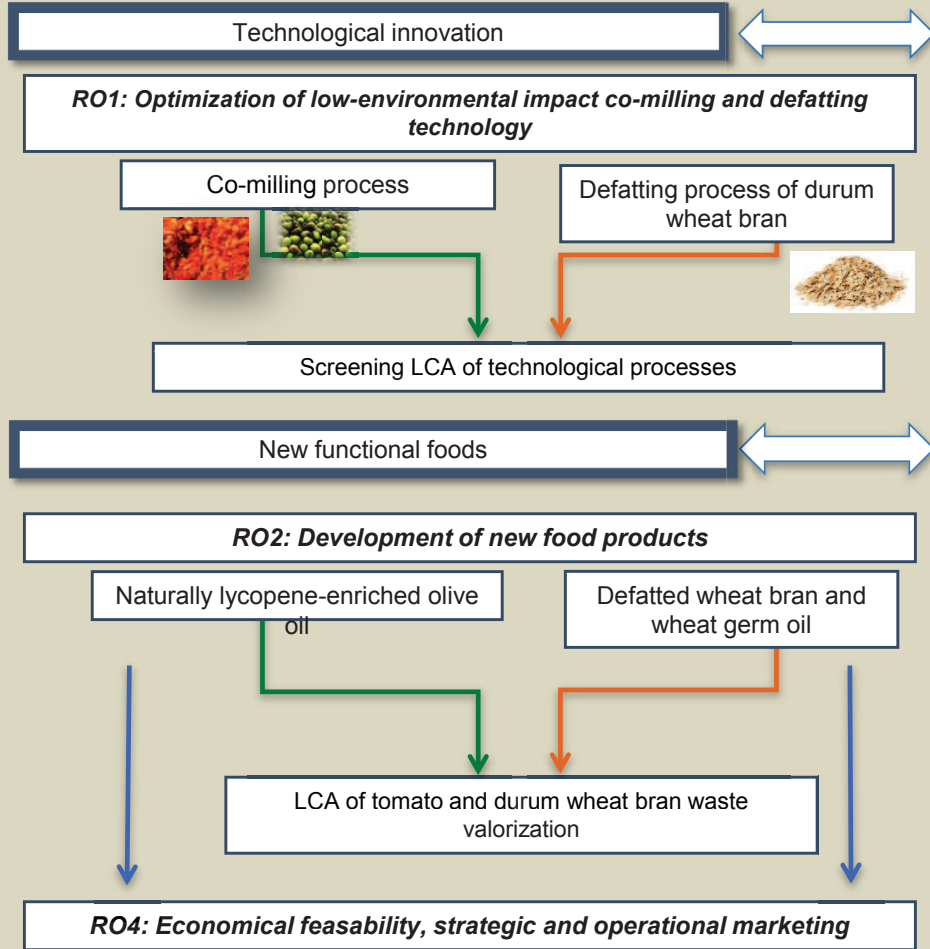


Regione Emilia-Romagna

OBJECTIVES

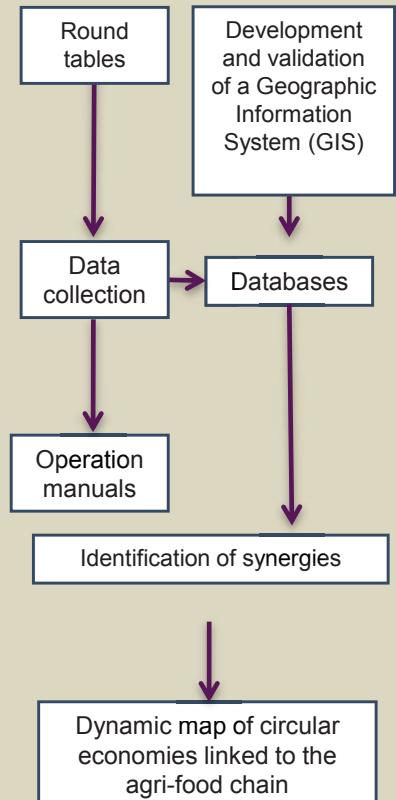


Valorization of agri-food wastes



System innovation

RO3: Implementation of tools for industrial symbiosis in the agri-food sector at regional level



RO5: Dissemination of results



Industrial applications



Integrated and sustainable agri-food supply chain

Industrial symbiosis → processed by-products through innovative technologies

Evaluation of the environmental sustainability of the by-products' valorization processes used in the two supply chains

Implementation of a geo-referenced and user-friendly software tool

Dynamic Map of circular economies



Oil and tomato supply chain

Description of co-milled oil:

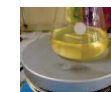
- Consumer acceptance
- Naming/labeling



Functional food?

Production at pre-industrial level

Development of new products:
Wheat bran oil
Defatted wheat bran



Marketing and promotion of developed products

Durum wheat bran supply chain

Technology standardization for wheat bran defatting