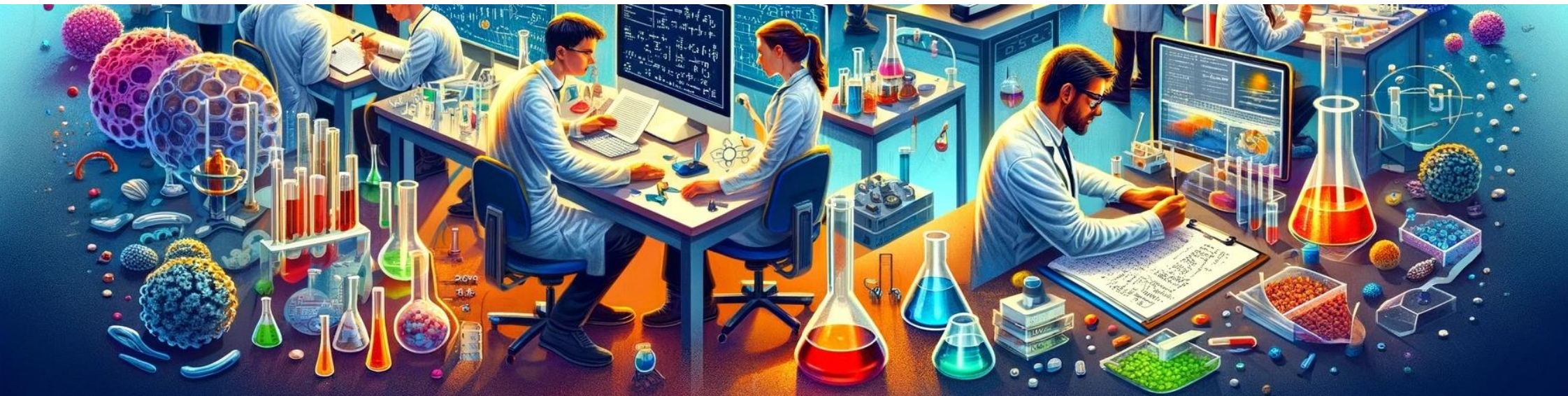


TOP TEN 2024

nelle scienze biologiche, animali e vegetali



Selezione dei migliori prodotti scientifici dell'anno

21 novembre ore 14:00 | Accademia delle Scienze dell'Istituto di Bologna | Sala Ulisse

MODERA: **LUIGI BOLONDI** | Presidente Accademia delle Scienze dell'Istituto di Bologna

PRESENTANO:

1. **VALENTINA DEL DOTTO** (Biochimica) | Dipartimento di Scienze Biomediche e Neuromotorie
 - *Intercellular nanotube-mediated mitochondrial transfer enhances T cell metabolic fitness and antitumor efficacy* | 2024
2. **GIULIA FERRARETTI** (Antropologia) | Dipartimento di Scienze Biologiche, Geologiche e Ambientali
 - *Mexican Biobank advances population and medical genomics of diverse ancestries* | 2023
 - *Ancient genomes reveal insights into ritual life at Chichén Itzá* | 2024
3. **GIOBBE FORNI** (Zoologia) | Dipartimento di Scienze Biologiche, Geologiche e Ambientali
 - *The nature of the last universal common ancestor and its impact on the early Earth system* | 2024
 - *Diverse ancestries reveal complex symbiotic interactions during eukaryogenesis* | 2024
4. **FRANCESCA GORINI** (Farmacologia) | Dipartimento di Farmacia e Biotecnologie
 - *Cancer mRNA vaccines: clinical advances and future opportunities* | 2024
 - *Daily briefing: How COVID-vaccine technology could personalize cancer treatments* | 2024
 - *Pioneers of mRNA COVID vaccines win medicine Nobel* | 2023
5. **ALEXIA MAZZINI** (Antropologia) | Dipartimento dei Beni Culturali
 - *Three-dimensional genome architecture persists in a 52,000-year-old woolly mammoth skin sample* | 2024
 - *Reversible Nucleic Acid Storage in Deconstructable Glassy Polymer Networks* | 2024
6. **CAROLA ELEONORA PAROLIN** (Microbiologia) | Dipartimento di Farmacia e Biotecnologie
 - *A citizen-science-enabled catalogue of the vaginal microbiome and associated factors* | 2023
7. **DAVIDE PASTORELLO** (Fisica Matematica) | Dipartimento di Matematica
 - *Divide-and-Conquer Quantum Algorithm for Hybrid de novo Genome Assembly of Short and Long Reads* | 2024
8. **EMMA PRANTONI** (Antropologia) | Dipartimento dei Beni Culturali
 - *Ancient Plasmodium genomes shed light on the history of human malaria* | 2024
 - *Repeated plague infections across six generations of Neolithic Farmers* | 2024
9. **ANDREA SILVERJ** (Zoologia) | Dipartimento di Scienze Biologiche, Geologiche e Ambientali
 - *Prophage proteins alter long noncoding RNA and DNA of developing sperm to induce a paternal-effect lethality* | 2024
 - *Living in the endosymbiotic world of Wolbachia: A centennial review* | 2021
 - *Large scale genome reconstructions illuminate Wolbachia evolution* | 2020
10. **CHIARA SUANNO** (Biologia molecolare vegetale) | Dipartimento di Scienze Biologiche, Geologiche e Ambientali
 - *A self-regulatory cell-wall-sensing module at cell edges controls plant growth* | 2024